

Stock code: 603037

Shanghai Carthane Co., Ltd

Provide safety and comfort for every journey

Carthane 凯众股份



01 / About Carthane

02 / Engineering capability

03 / Innovation

04 / Q&A



01

About Carthane

About
Carthane

Engineering capability

Business philosophy

Customer-centric, valuing staff who strive and contribute, company growth, environmentally friendly, and giving back to shareholders and society.

Innovation

Q&A

27⁺

Since 1999

105

Sales revenue
(Million €)

900

Employees

V i s i o n

Becoming a leading, global technology enterprise

M i s s i o n

Provide safety and comfort for every journey

V a l u e s

Integrity .Sharing .Innovation .Collaboration .Efficiency

Carthane 凯众股份

Brake system and suspension system

Pedal Assembly

Weight reduction
Energy saving
Noise control



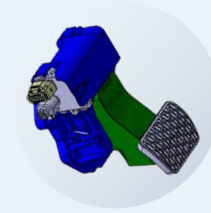
Spring Isolator

Coil spring protection
Isolation and noise control



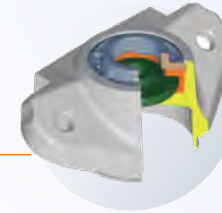
Brake Pedal by Wire

High security
High flexibility
High performance



Top Mount

Handling performance
Isolation and noise control



Jounce Bumper

Suspension assist spring
Isolation and noise control



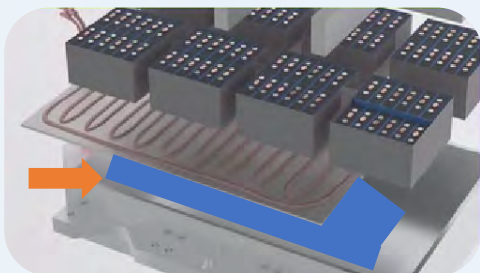
Plastic Parts

Damper protection

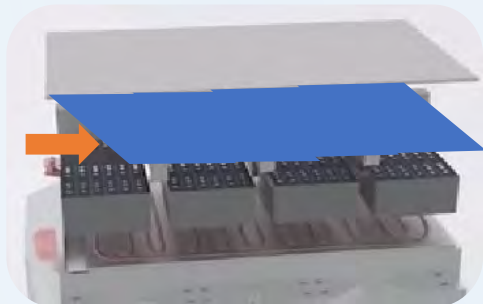


EV battery related parts

Bottom PU Foam for Cold Plate



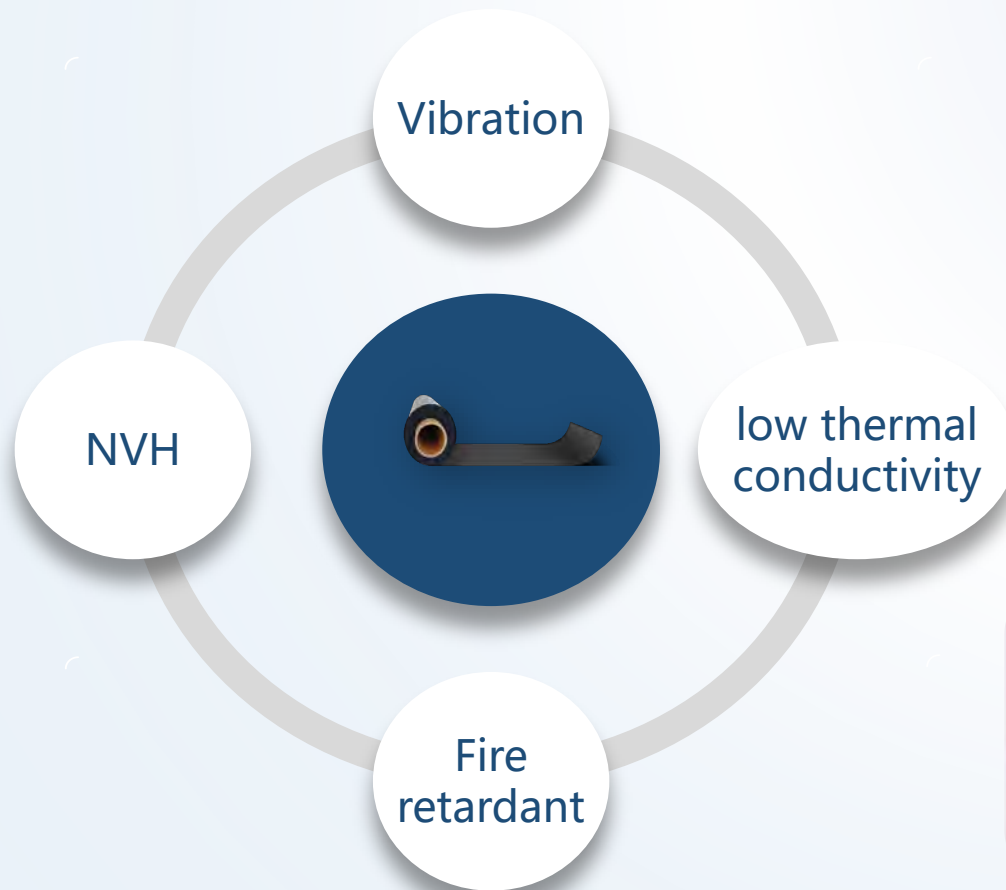
Battery Aluminum Upper Housing



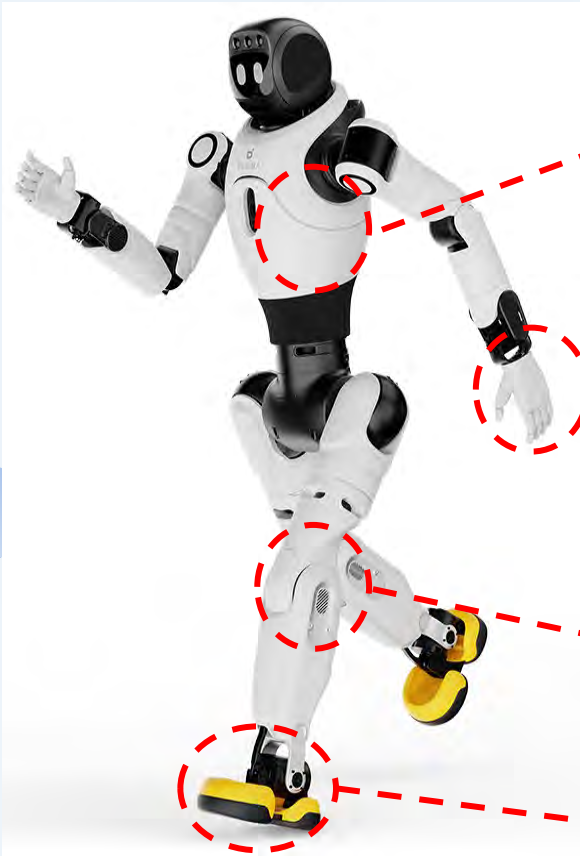
Support Between Cell and Chassis



Upper/Lower Cover Sealing Foam for Battery PACK



Robot related parts



Energy Absorption & Cushioning

Dexterous Hand - Pressure-Sensitive Anti-Slip

Joint Shim - Vibration Damping & Noise Reduction

Shoes-Anti-Slip



Wheel requirement:

◆ Strength Requirements:

Capable of withstanding 15kg load per wheel, 10g radial impact, and 5g axial impact;

◆ Lightweight:

Total weight of hub + tire within 200g;

◆ Low Cost:

Low per-unit cost;

About Carthane

Engineering capability

Innovation

Q&A

1993-1994

PU JB development team found from Liming Research Institute of Chemical Industry; Signed the JB development contract with Shanghai Volkswagen

1997

TS16949 approved;
First jounce bumper product SOP for VW Santana car model

1995

In China, First jounce bumper production line established in 1995 by Carthane team

2000-2002

Carthane headquarter moved to Shanghai from Luoyang

2004-2005

MDI material developed successfully;
Shanghai plant SOP in 2005

2006

Establish strategic cooperation with Bayer In Vulkollan® material;
[First plastic brake pedal production line established, brake pedal supplied for Roewe750](#)

2012-2014

Carthane USA established;
First top mount product SOP on Chery Auto;
[Electric accelerator pedal business kick-off](#)

2015

Carthane Luoyang Plant SOP

2017

Listed in Shanghai Stock market in 2017;
[Electric accelerator pedal SOP on MG ZS](#);
Win GM T1XX jounce bumper project

2021-2023

Shanghai R&D center SOP, construction size is 12688m²
Carthane Nantong Plant construction, built-up area is 39,367m²

2024-2027

Carthane Mexico plant SOP in 2024(PU parts);
[Carthane Mexico plant Brake&Accelerator Pedal SOP in 2025](#)
[Carthane Morocco plant estimated SOP in 2027\(Pedal\)](#)

About Carthane

Engineering capability

Innovation

Q&A



Carthane USA---Detroit

USA

Carthane Europe GmbH--- Frankfurt

Germany



China

Carthane China:---Headquarter in Shanghai

Mexico

Mexico plant--- Guanajuato

Morocco

Morocco plant---Tangier(SOP in 2027)



China production site

Shanghai Headquarter

Nantong plant

Ningde plant(Pedal assembly)--Satellite factory

Zhengzhou plant--Satellite factory

Global production footprint

China-Nantong

Size:51,920 square meters

Main coverage: China, Asia, backup for Global

Customer: VW,Audi,GM,BYD,T, ZF,Continental,etc.

- SOP in 2022
- Operation process:Foaming, injection,blowing,housing,assembling



Mexico-Guanajuato

Size:5,600 square meters

Main coverage: North America, South America

Customer: T, GM, Tenneco, Stellantis,

Thyssenkrupp, Mando, Firestone etc

- SOP in 2024
- Current process: Foaming, assembling
- Housing and injection is under planning



Morocco-Tangier

Size:18,000 square meters

Main coverage: Europe, Africa

Customer: Renault, Mercedes, VW, Audi, Stellantis, etc.

Features:

- Estimated SOP in 2027
- Step 1: Brake Pedal & Accelerator Pedal
- Step 2: Jounce Bumper & Isolator
- Step 3: Top Mount & Injection/Blow molding parts



Mexico-Guanajuato



Mexico-Guanajuato



Mexico-Guanajuato



China-Nantong




China-Nantong

Global Collaboration

Centered around ERP, multiple systems can provide efficient information flow and business processes between different plant

One Carthane ,One quality standard

OA
Information collaboration



+

ERP
Enterprise Resource Planning




+

MES
Manufacturing execution system



+

PLM
Project lifetime management



+

CRM
Customer relationship management



+

WMS
Warehouse Management System



+

Pedal achievements of 2025



Audi A7L



Audi E5



Audi E7x



M-Y SUV



Cadillac XT5



Buick Electra L7



Mercedes MB.EAL



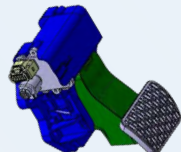
Renault XB4/C-EV/HJB



Lucid Midsize



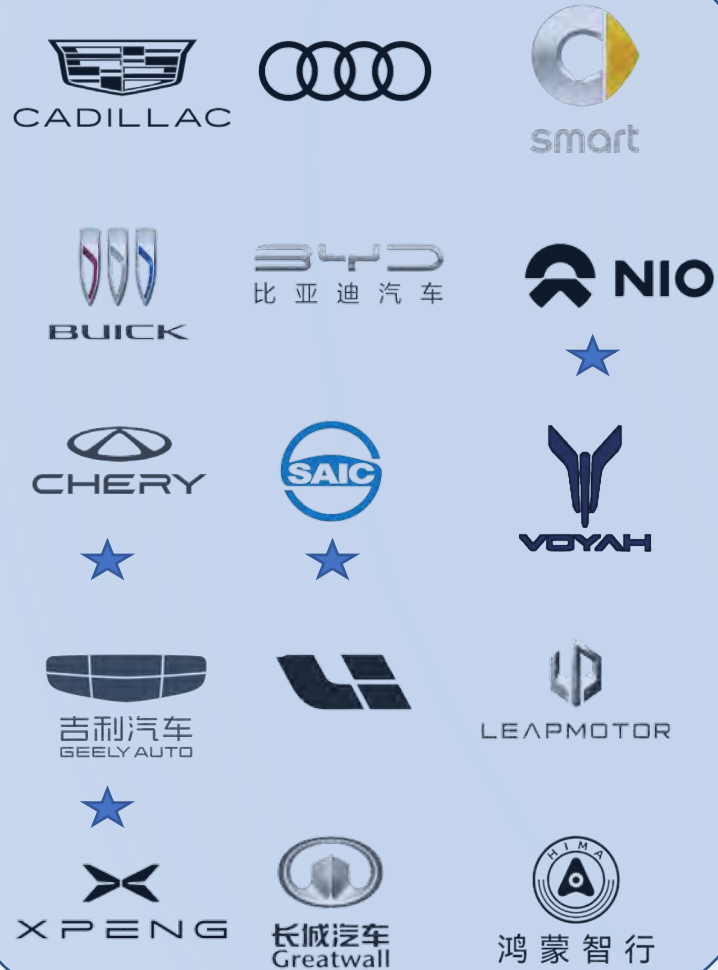
Vinfast VF8



New nomination
of Brake by wire
of Chinese
OEM,SOP in 2027

Main pedal customer

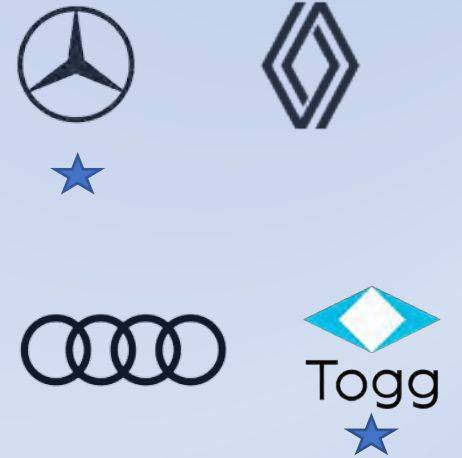
China market



North America market



Europe market



- ✓ **Ranking is not in any particular order*
- ✓ *The asterisk represents the supply of both A pedal and B pedal*
- ✓ *Audi Europe pedal program is under bidding*

Main suspension parts customer

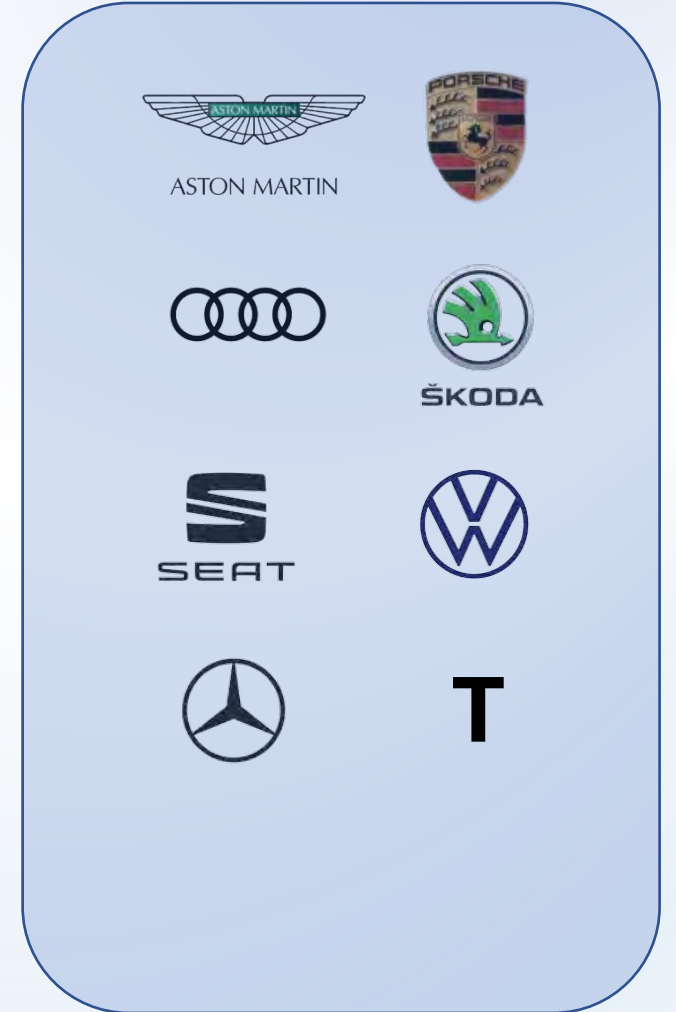
China market



North America market



Europe market



Certification



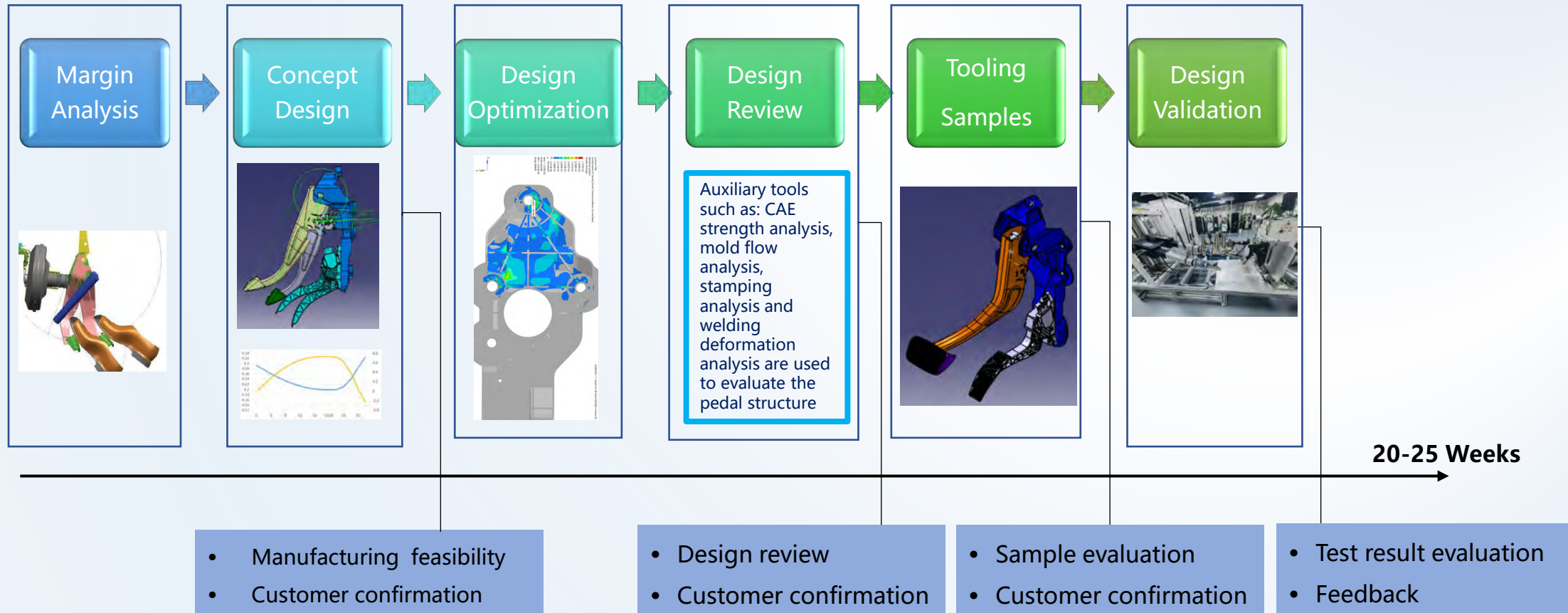


02

Engineering Capability

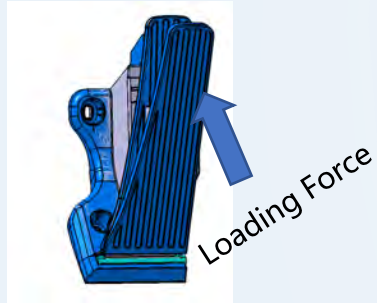
Pedal Development Flow

Lesson & Learn Database

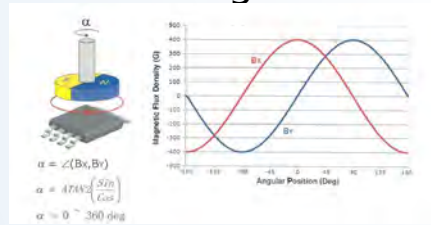


APM Design Capability

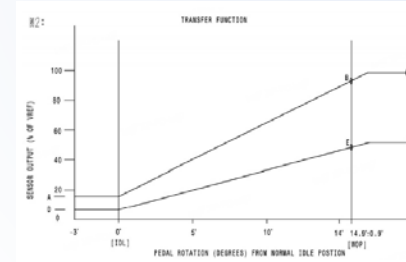
Non-Contacting tech



Base on the principle of Hall effect Signal

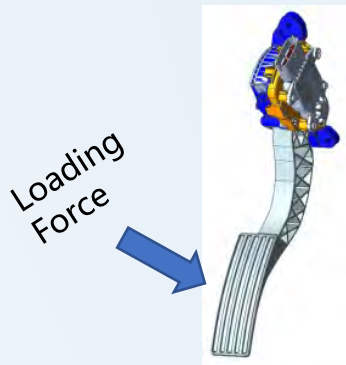


Hall effect



Voltage signal output

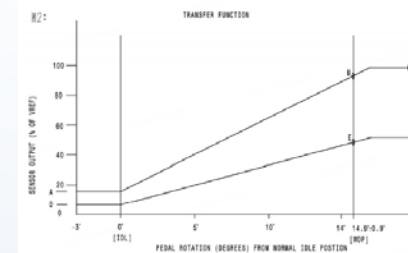
Contacting tech



Base on the principle of Potentiometer



Potentiometer



Voltage signal output

Testing capability - Customer approval



Testing capability

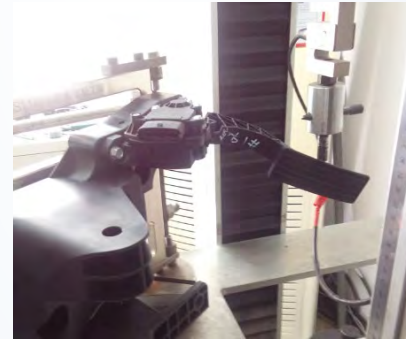
Functional Test



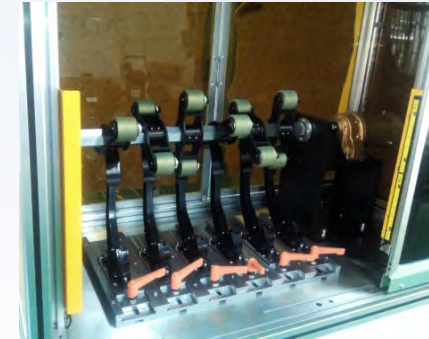
Life Test



Strength Test



Rapid Rebound Test



Energy Absorption Test



Thermal Shock Chamber



Salt Spray Test



Environment Test



Testing capability

Durability Test



Strength Test



Vibration Test



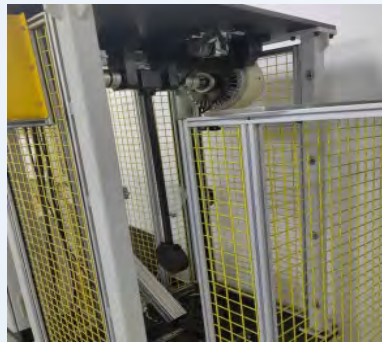
NVH



Environment test Chamber



Shock Test



Weld Penetration



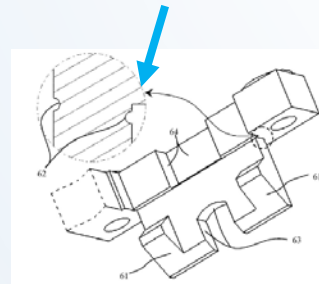
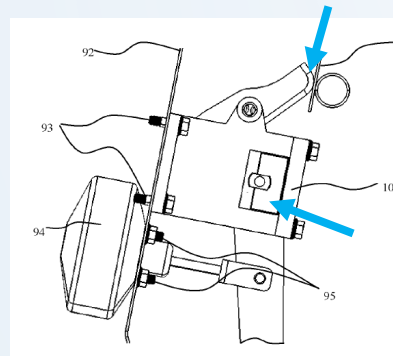
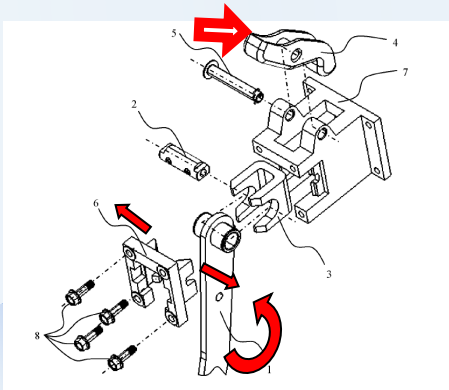


03
Innovation

Existing product with new function

PRS(Pedal release system)

Patent A(CN202279098U):Fixed structure loose type



Description: Safety release structure

Application: Brake Pedal

Features:

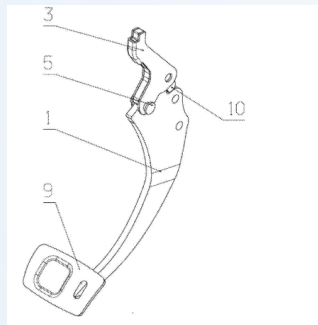
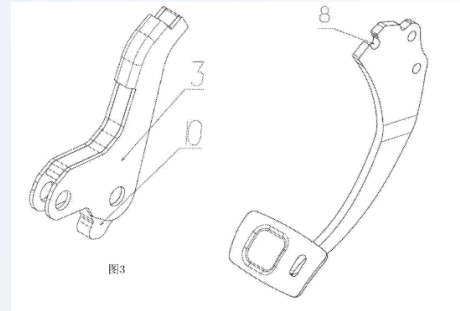
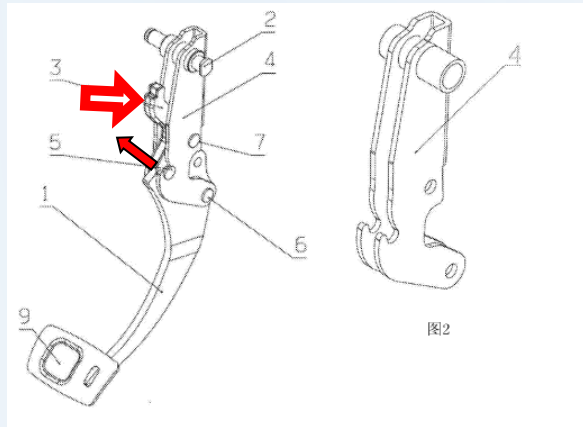
- Dash Crash with CCB
- Shaft fixing mechanism falls off
- Fracture Fuse

Existing product with new function

PRS(Pedal release system)

Patent B(CN205396065U):Folding Pedal Arm

Crash



Description: Safety release structure

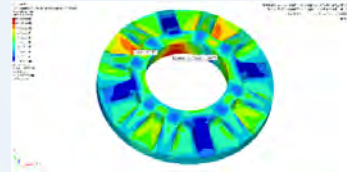
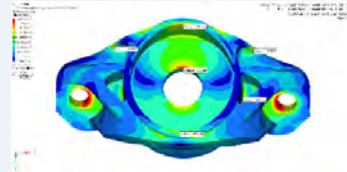
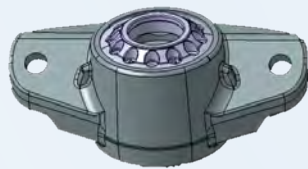
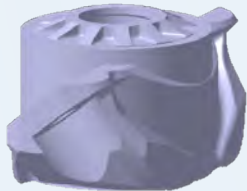
Application: Brake Pedal

Features:

- When CCB crash, the impact support 3 rotates around the third pin 7
- Causing the first pin 5 to fall off from the U-shaped slot 8 of the main swing arm 1

Next generation top mount

Plastic top mount



Plastic design



Original aluminum design

Description: Plastic top mount

Application: light weight demands

Features:

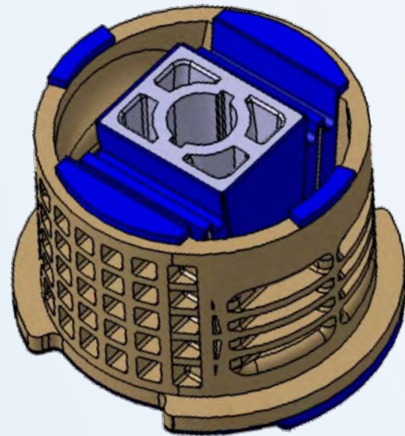
- Plastic housing and cap replace aluminum design

Development status:

- Prototype

New products for new application

PUR Bushing



Description: PUR Bushing

Application: electric vehicle powertrain, body

Features:

- PUR replace rubber for powertrain mount, body mount application
- Better NVH performance compared to rubber material

Development status:

- Concept

Thanks

1993年

黎明化工研究院正式成立聚氨酯缓冲块筹备组。

1994年

聚氨酯缓冲块筹备组与上海大众签订聚氨酯缓冲块国产化开发协议。

1999年

首个缓冲块产品——别克新世纪
满足苛刻量产，供货上海通用。



别克新世纪

2002年

上海大众乘用车技术中心成立
上海大众乘用车技术中心
成立，负责乘用车整车开发、试验、
售后服务及备件供应等整车开发。



上海大众乘用车技术中心

1997年

成立洛阳凯众汽车新材料有限公司，
同年获得首次质量管理体系认证。



洛阳凯众汽车新材料有限公司