

# IN ME KHA

Innovative Mechanical Engineering



We are a Mexican company dedicated to the metal-mechanical sector, our objective is to provide the best design service, equipment manufacturing, implements and continuous improvement projects for different sectors of the industry

**We listen to your needs, assess them carefully, and propose the most effective solution for your project.**

# About Us

IN  
ME  
KHAM



## INMEKHA INGENIERÍA S.A. DE C.V.

El Recodo No. 130, Col. La Lagunita, C.P. 37106, León, Guanajuato, México.

Ha sido evaluado y cumple con los requisitos de:

### ISO 9001:2015

**Alcance:** Diseño y desarrollo de proyectos metal mecánicos, pailería, pintura, maquinados, instalaciones mecánicas y reparación a equipo de manejo de materiales.

	Fecha inicial de registro Enero 12, 2023	Esquema de certificación Sitio Único
	Fecha de decisión del certificado Enero 12, 2023	Última actualización Enero 12, 2023
NÚMERO DE CERTIFICADO GSC9KMX1142	Periodo de registro <b>12/ENE/23</b> <b>11/ENE/26</b>	 Executive Director GlobalSTD Certification

Since January 2023, we have been proudly certified under ISO 9001:2015, backed by our robust Quality Management System. This standard serves as the foundation for all our activities, ensuring strict adherence to our Quality Policy.

We are committed to customer satisfaction by meeting the required standards in every metal-mechanical project we develop, implementing lean operations across all processes in our organization, and continuously training our team in the ongoing pursuit of continuous improvement.



# +2.33 M

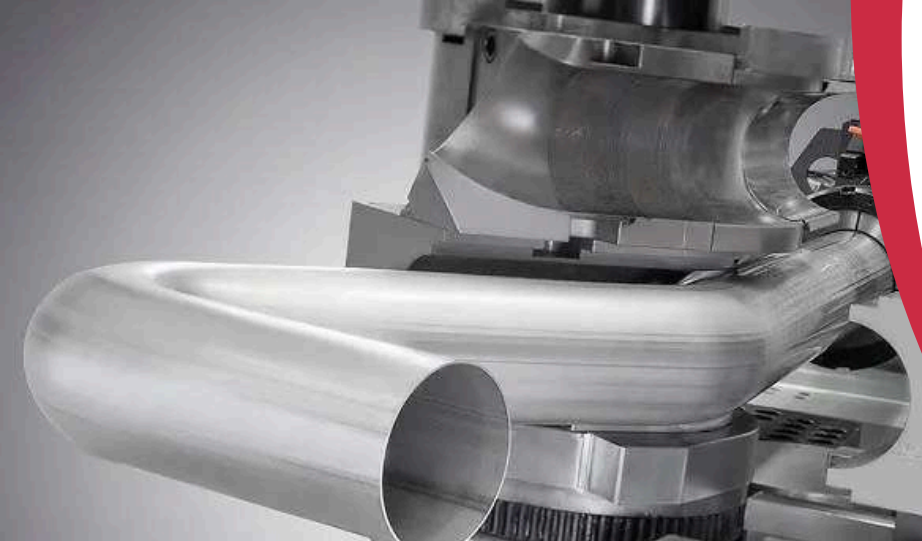
## Investments in 2024

At **Inmekha**, we are committed to innovation and sustainability. We've invested in **solar panels** to optimize costs and reduce our carbon footprint, and we've acquired new equipment—an air compressor and **sandblasting technology**—that strengthens our service capacity. With these initiatives, we reaffirm our commitment to efficiency, quality, and responsible growth.





# At **Inmekha**, we are always looking toward the **future**



Over the next five years, we will be adding an electrostatic painting line  
and a CNC tube bender, expanding our capabilities and strengthening  
our business lines.

**2025-2030**



# +4,500 m2 of facilities

They are designed to maximize efficiency and quality at every stage of production. Our facilities include specialized areas for **painting, cutting, machining, welding, and sandblasting**, as well as operational offices and support spaces. We also have a large maneuvering yard that streamlines logistics and material flow. Every area is carefully planned to ensure safe, organized, and productive processes, reflecting our commitment to excellence and innovation in every project.

# About Us

Mechanical  
Design

Material  
Handling

Sheet Metal Work  
& Construction

Component  
Manufacturing



# Our clients' satisfaction speaks for us.



DJK GLOBAL Mexico



TOYOTETSU DE MEXICO S.A. DE C.V.





# Racks & Handling Material

**IN  
ME  
KHA**

Innovative Mechanical Engineering



**IN  
ME  
KHA**   
Innovative Mechanical Engineering

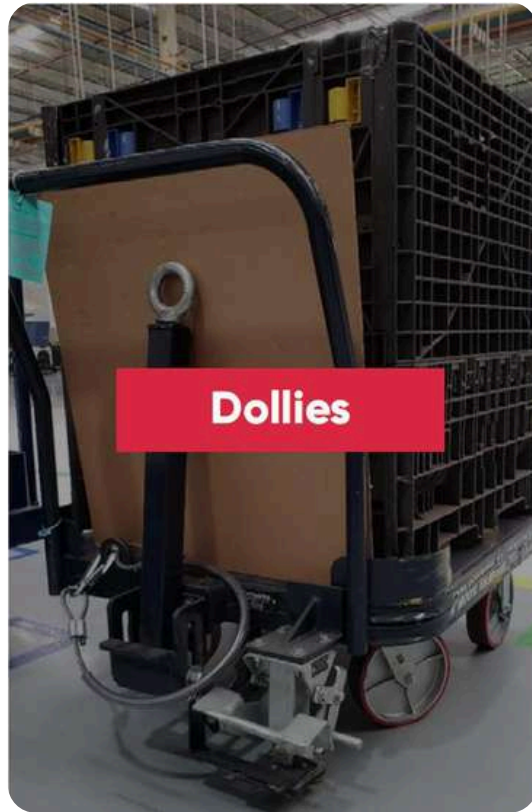


**IN  
ME  
KHA**   
Innovative Mechanical Engineering

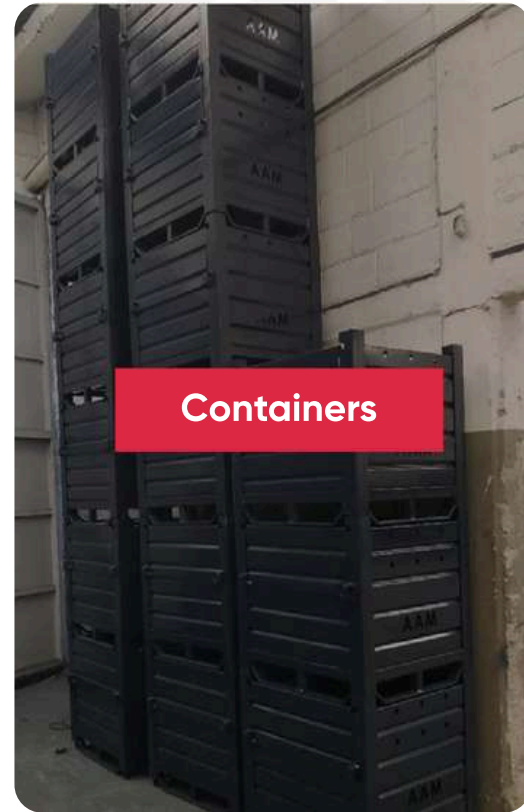




**Racks**



**Dollies**



**Containers**



# Stands & Reels

**IN  
ME  
KHA**

Innovative Mechanical Engineering





# Parts and Components Manufacturing

**IN  
ME  
KHA**  
Innovative Mechanical Engineering

# Technical Plastics Machining

At INMEKHA, we use specialized machining processes for technical plastics on CNC lathes and machining centers, ensuring high-precision, top-quality parts.

## Benefits

- High precision and production efficiency
- Flexibility for both short and long production runs
- Reduced waste and lower environmental impact

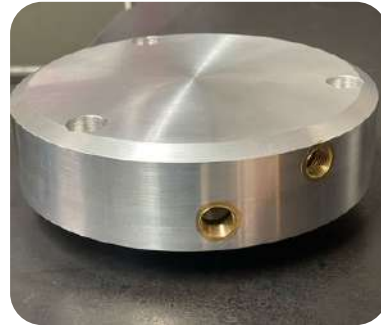
## Main Processes

- **Turning:** Ideal for cylindrical parts or those with rotational symmetry.
- **Milling:** For creating complex profiles and flat surfaces.



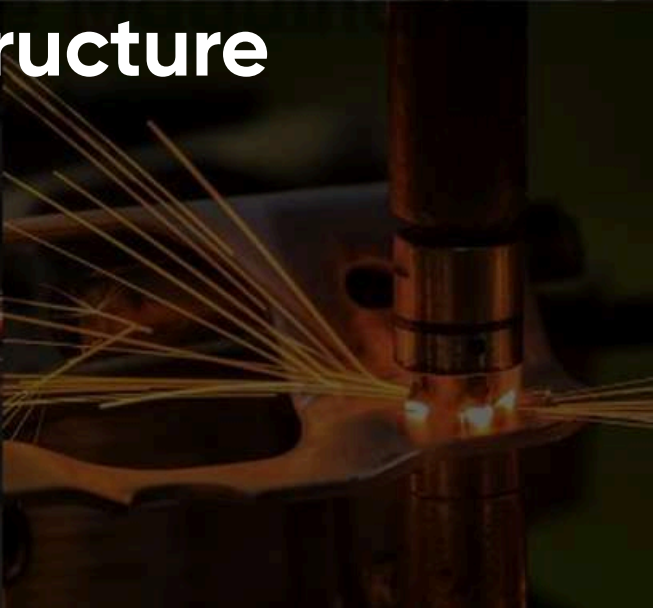
# Spare Parts and Industrial Machining

We perform precision steel machining on CNC lathes, ensuring high-strength, high-quality, and highly accurate components for demanding industrial applications.





**Our  
Infrastructure**



**IN  
ME  
KHA**  
Innovative Mechanical Engineering

# Welding Equipment



## Miller 252 MIG Welder

We have 22 Miller 252 MIG welding machines, capable of welding carbon and stainless steel from C22 up to 1/2" thickness, using solid, stainless, and flux-cored wire for high-quality joints.



## Diversion 180w/Auto-Line

A versatile TIG machine that works with carbon steel, stainless steel, and aluminum from 0.010" to 1/4" thickness, using tungsten electrodes of various types for maximum precision.



## Infra MI 2-300 DC Electric Arc Welder

We have 2 SMAW welding machines, ideal for carbon steel, stainless steel, and aluminum from C22 up to 1" thickness, using coated electrodes E6013, E6011, E7018, and E7024.



## Spot Welder

A specialized machine for joining galvanized and carbon steel up to gauge 14, using 1/4" spot welds to ensure strong and precise assemblies.

# Cutting Equipment



**Band Saw**

With 2 machines in operation, it enables precise cutting of steel, wood, and engineering plastics, with a capacity of up to 7" x 7".



**Plasma Powermax 45**

A plasma cutting machine for carbon and stainless steel, capable of cutting up to 1/4" thickness with a 2mm bevel, in any dimensions.



**Plasma Powermax 65**

Two high-power plasma cutting machines, ideal for carbon and stainless steel, cutting up to 3/8" with a 2mm bevel, adaptable to any dimensions.



**Pantógrafo CNC**

It allows highly precise cutting of carbon and stainless steel up to 1" thick, on plates up to 4ft x 10ft, with a 4mm bevel.

# Cutting Equipment



**Disc Cutter**

With 2 machines in operation, it enables precise cutting of steel, wood, and engineering plastics, with a capacity of up to 7" x 7".



**Iron Worker Shear  
– Flat Bar**

Designed for cutting flat bars in carbon and stainless steel, with a capacity of up to 3/8" x 11.5".

**Iron Worker Shear  
– Angle Iron**

Specialized in cutting angle profiles, up to 3/16" x 2.5" in carbon and stainless steel.

**Iron Worker Shear  
– Round Bar**

Capable of cutting round profiles up to 30mm in diameter in carbon and stainless steel.

**Iron Worker Shear  
– Square Bar**

Designed for cutting square profiles up to 1" in carbon and stainless steel.

**Iron Worker –  
Punching**

Precision punching of carbon and stainless steel, up to Ø22x15 and Ø40x8.

# Cutting Equipment



**TK 1624 Slitter**

Machine for longitudinal cutting of galvanized and carbon steel, up to gauge 16 and 24" wide, with an approximate speed of 90 FPM and a 3/4 HP motor.



**Oxy-Fuel Cutting Equipment**

High-precision linear cutting of metals, with a capacity of up to 3".



**Drill-Milling Machine**

A versatile machine for drilling and milling in steel, aluminum, and other metals, ensuring precision and high-quality finishes on parts of various sizes and thicknesses.



**Milling Machine**

A machining machine for precise cutting and finishing of metals and other materials, ideal for complex parts and high-quality production.

# Forming Equipment



**Profile Rolling Machine**

Machine for carbon and stainless steel, capable of rolling up to gauge 12 on small profiles and C14 on larger profiles, with a capacity of up to 2" profile.



**Tube Bender**

Capable of bending carbon and stainless steel up to gauge 12 on small profiles and C14 on larger profiles, handling lengths of up to 2.5" per profile.



**CNC Bender**

Designed for precise bending of carbon and stainless steel, up to 3/16" thick and 500mm in length.



**Router CNC**

Advanced cutting machine for steel, wood, and engineering plastics, with a capacity of up to 2" and dimensions of 4ft x 10ft.

# Forming Equipment

## Mori Seiki SL-3 CNC Lathe

A high-performance machine designed for machining complex parts with maximum precision. Its robust and reliable construction allows it to operate in demanding industrial environments, delivering smooth finishes and tight tolerances. Equipped with a 15 kW spindle, 12-station turret, and Fanuc CNC control, it is ideal for manufacturing automotive, aerospace, and specialized tooling components. With a maximum swing of 570 mm, cutting diameter up to 370 mm, and machining length of 530 mm, it combines power, speed, and precision, ensuring efficiency and reliability in every operation.

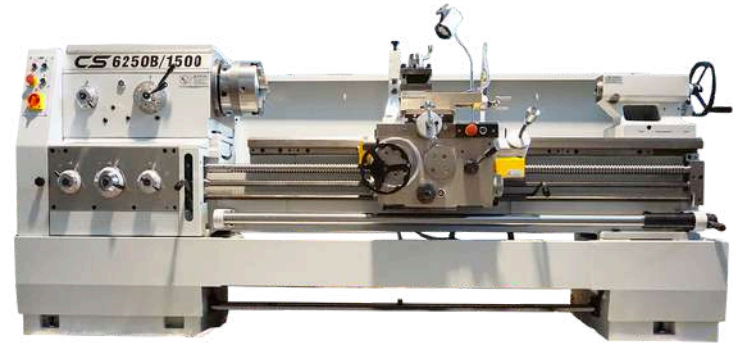


# Forming Equipment



**Aries GH1440B Lathes – 14" x 40"**

Three precise and versatile metal lathes, each with a 14" swing and 40" between centers, ideal for high-accuracy work. They are equipped with a 3HP motor, 16-speed headstock, hardened and ground bed, foot brake, coolant system, work lamp, 2 chucks, and both fixed and traveling steady rests, providing efficiency and reliability in production.



**CS6250B/1500 Lathe (20" x 60")**

This is a robust and versatile lathe with a 20" swing and 60" distance between centers. It's designed for precise and efficient operations and includes a complete coolant system and all accessories to simplify the operator's work.



### **Baoji CK40 CNC Lathe**

This is a Fanuc Oi-TF5 controlled, slant-bed CNC lathe designed for workpieces up to a 400 mm swing and 500 mm in length. It's powerful, precise, and reliable, making it ideal for high-quality turning operations in advanced production.



### **HAAS VF-2 VMC Machining Center**

This is a high-performance, powerful, and reliable vertical machining center with X, Y, and Z travels of 762 mm, 432 mm, and 508 mm, respectively, and a fourth axis. It's ideal for manufacturing complex parts and is adaptable to any advanced production project.

## Faro Arm - Precision Measurement System

Advanced 3D scanning equipment for millimeter-accurate inspection and verification of parts, ensuring quality, efficiency, and precision in every production run.

- High-precision 3D measurement
- Reliable quality control
- Inspection of complex parts
- Time-saving for production
- Easy to move and ergonomically designed
- Ensures compliance with standards
- Enhances process efficiency



# Air Compressors



## 30 HP Air Compressor

High-capacity equipment designed to provide a continuous supply of compressed air for industrial processes. Features an integrated drying system to ensure clean, moisture-free air for reliable and efficient performance.



## 10 HP Air Compressors

Two versatile 10 HP units, perfect for supplementary or lower-demand operations. Equipped with a drying system, they provide clean and stable compressed air for a variety of industrial applications.

# Sandblasting Equipment

## Professional Sandblasting Equipment

Surface cleaning and preparation system that uses high-quality abrasives to remove rust, paint, and contaminants.

Ensures uniform finishes ready for painting or coatings, delivering efficiency, control, and consistent results in industrial processes.



# With Inmekha, You Get:

## **Customization**

Get the highest level of personalization

## **Save Time**

Transport and deliver your cargo in perfect condition

## **Reduce Costs**

Lower your transportation and handling expenses

## **Safety**

Ensure the security and smooth operation of every process

IN  
ME  
KHA

**We'll be happy to advise you with  
the best solutions for your project!**

**Contact Us!**



477 401 4975



El Recodo 130. La Lagunita



comercial@inmekha.com